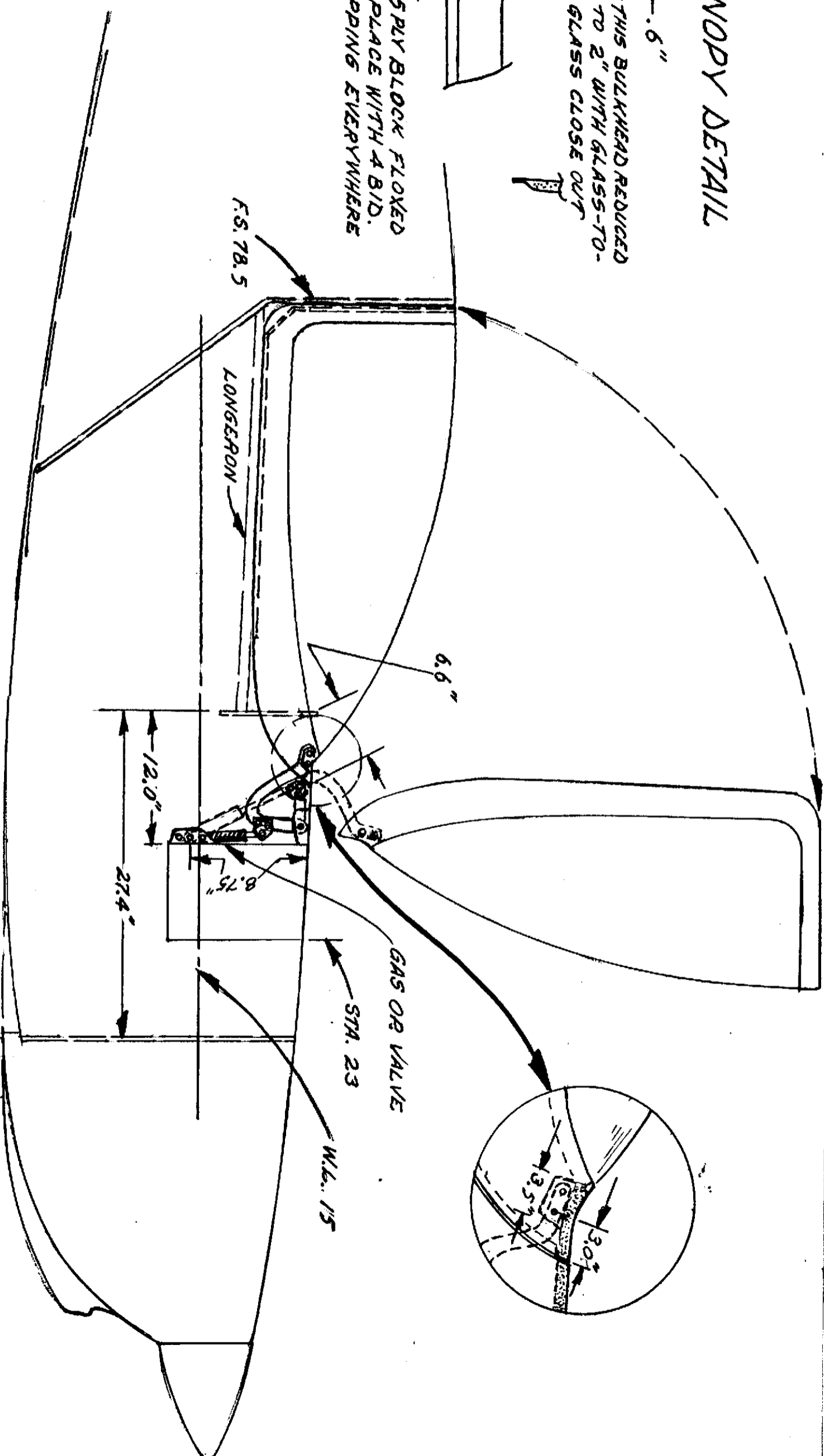
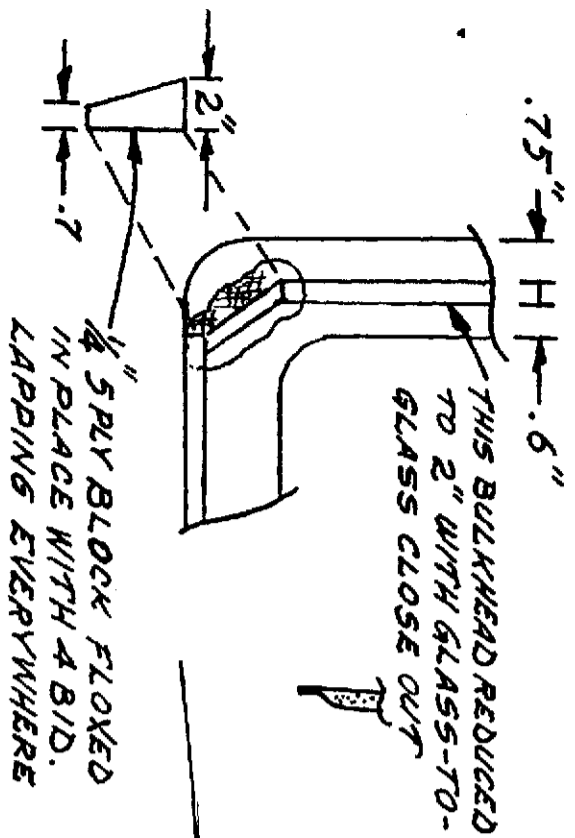


REAR CANOPY DETAIL

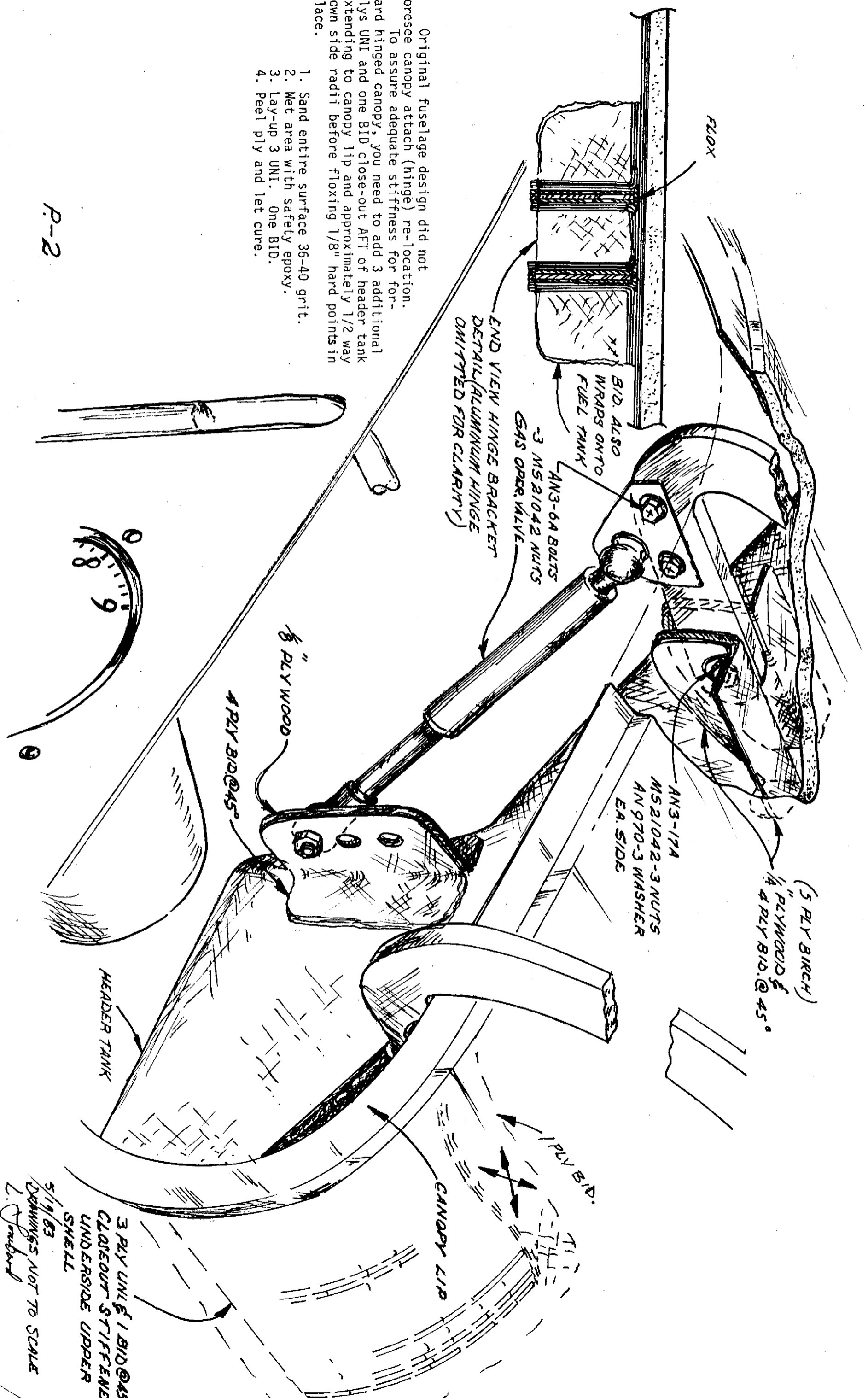


FORWARD-MOUNTING CANOPY HINGE DETAIL

5/19/83
DIMENSIONS NOT TO SCALE
L. Kunkel

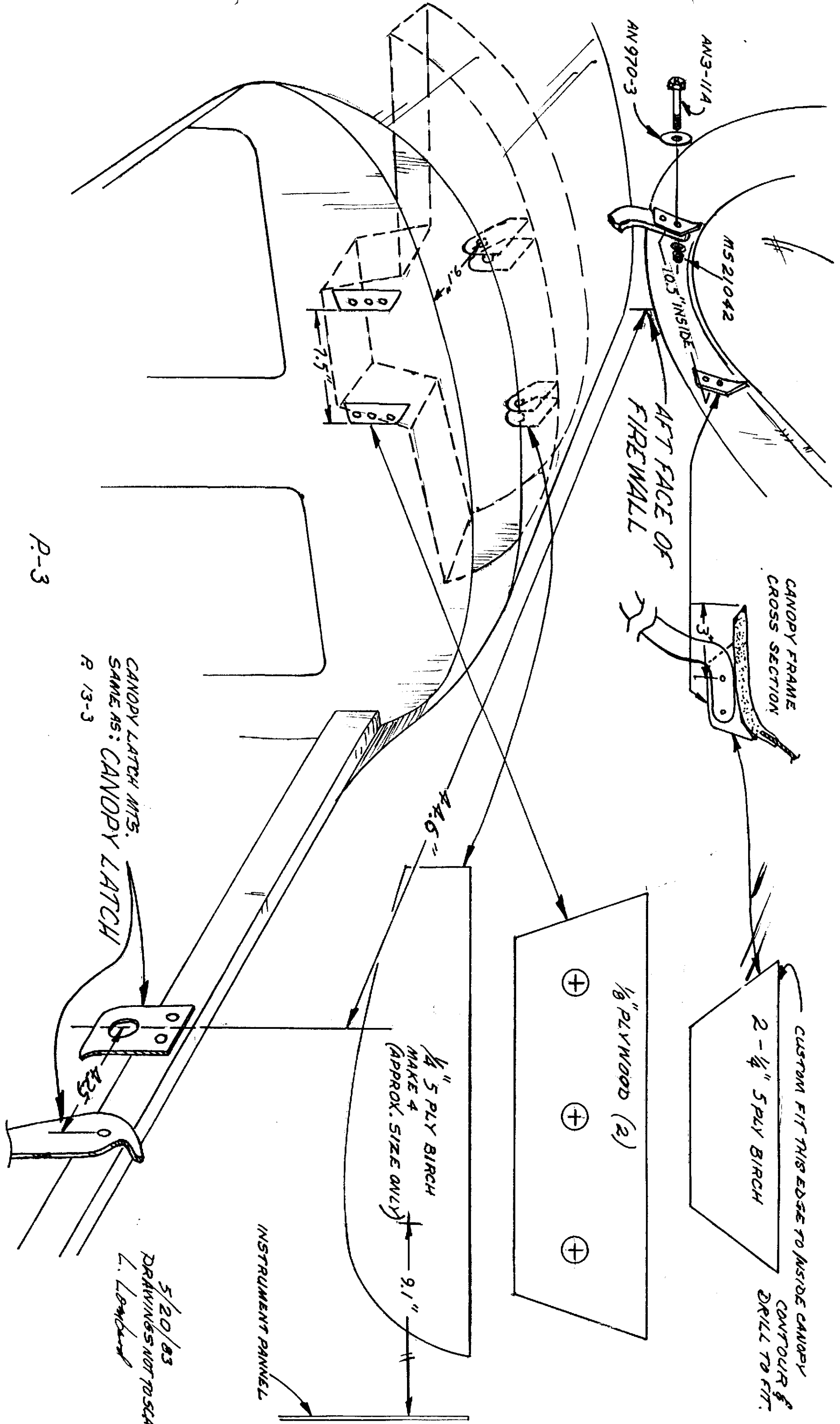
Original fuselage design did not foresee canopy attach (hinge) re-location. To assure adequate stiffness for forward hinged canopy, you need to add 3 additional plys UNI and one BID close-out AFT of header tank extending to canopy tip and approximately 1/2 way down side radii before floxing 1/8" hard points in place.

1. Sand entire surface 36-40 grit.
2. Wet area with safety epoxy.
3. Lay-up 3 UNI. One BID.
4. Peel ply and let cure.



P-2

5/19/83
 DRAWINGS NOT TO SCALE
 L. J. Furbard



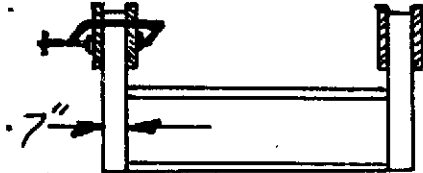
P-3

CANOPY LATCH MTS.
 SAME AS: CANOPY LATCH
 P 13-3

5/20/83
 DRAWINGS NOT TO SCALE
 L. Lombard

Installation Procedure

1. Apply 3 ply UNI., one BID stiffener.
2. Trial fit canopy fit to fair with fuselage all around.
3. Install latch assembly right side (see drawing and 13-3 of plans).
4. Clamp (2)-1/4 PLY. Fuselage hinge brackets spaced 7" apart VIA. 8"X1".7" wooden scraps.

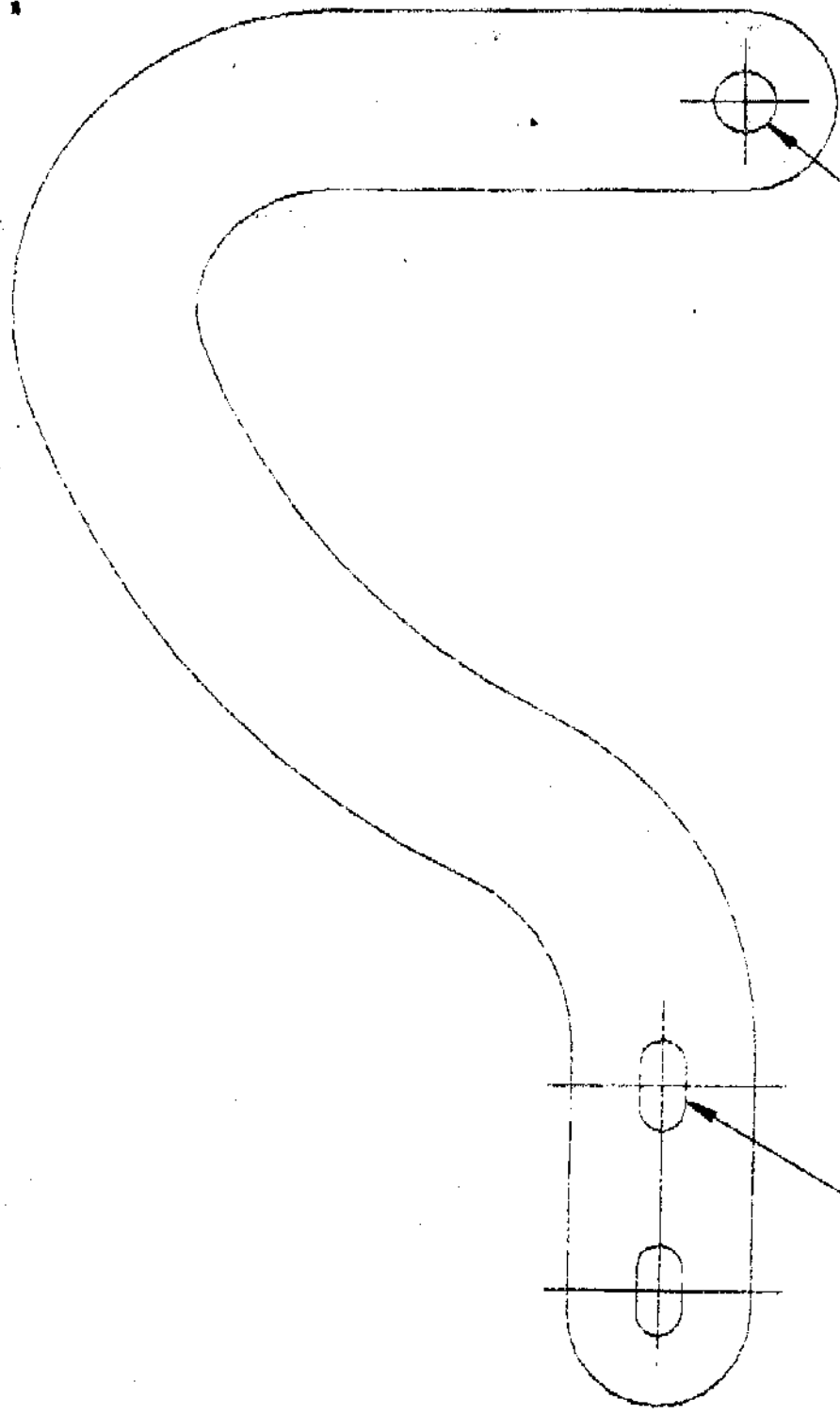


Jigging Arrangement for Spacing/parallel.

5. Epoxy assembly (centered) to fuselage and let cure.
6. Remove clamps and glass 4 PLY BID. lapping onto fuel tank (see drawings), let cure.
7. Drill 3/16 and bolt aluminum hinge brackets in place.
8. Custom fit 1/4" 5 PLY birch canopy brackets (2).
9. For the next operation you need to sit in fuselage, latch canopy and 5 min. 1/4" plywood brackets in place, clamping till secure. Maintain parallelism of brackets/hinges. (see drawings for dimensions).
10. Glass 4 PLY BID @ 45° both sides of plywood, let cure.
11. Drill 3/16 and bolt hinges in place (sitting inside with canopy closed).
12. Bond and Glass lower gas valve pivot/attach points to lower header tank (see drawings for location-lay-up schedule). Let cure.
13. Drill and install gas op. valve (we ended using center holes-yours may vary).
14. Install proper hardware, cycle canopy, and adjust.

11/32 DRILL

1/4 x 1/2 SLIT



1.5"

10"

9"