

# Q-200 Metal Parts Drawings

(Free Sample: For the rest of the drawings visit <http://www.quickheads.com>)



Created by Dan Yager  
for

<http://www.quickheads.com>

Copyright © 2010 The Quickie Builders Association

(Rev 1.0 4/27/10)

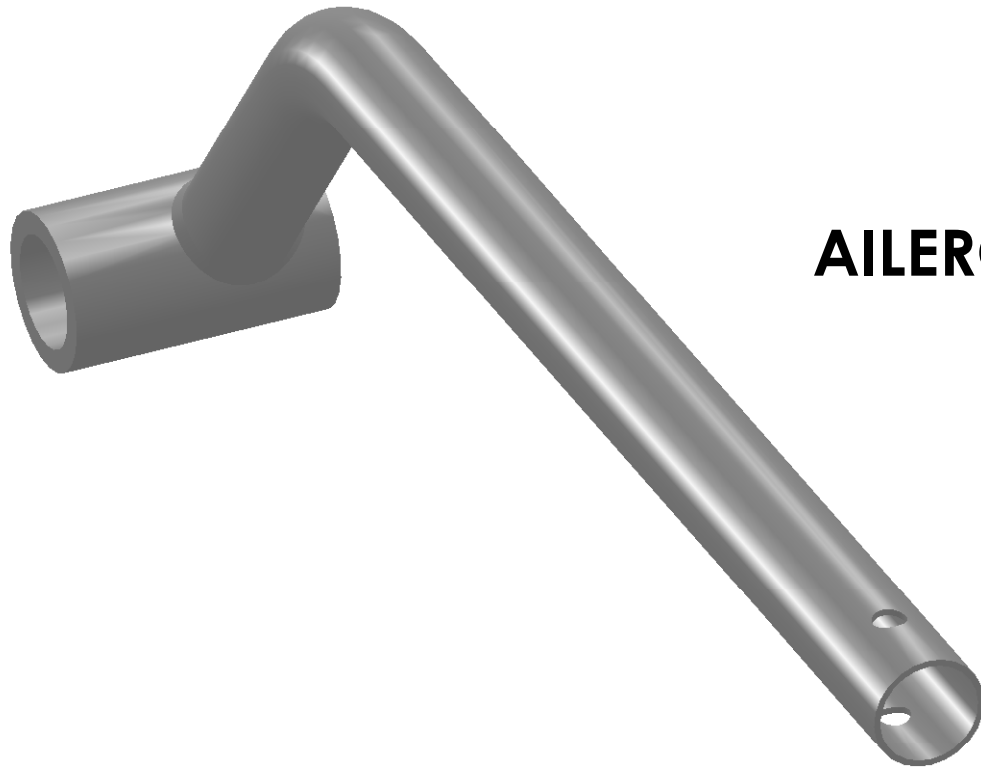
## Legal Stuff:

These drawings were created by an amateur homebuilt aircraft enthusiast as he removed the pieces from his own airplane during reconstruction. He is not an engineer, nor has he done any metallurgical tests to find the exact make-up of the components removed. Any listed "material" on the attached drawings should be considered a "best guess" by said amateur. That being said, it is up to the individual homebuilder to determine the usability and appropriateness of the drawings and information contained herein.

Neither Quickheads.com nor its contributors shall be held liable for any use of the information described and/or contained herein and assumes no responsibility for anyone's use of the information. In no event shall Quickheads.com or contributors be liable for any direct, indirect, incidental, special, exemplary, or consequential damages (including, but not limited to, procurement or substitute goods or services; loss of use, data, or profits; or business interruption) however caused and on any theory of liability, whether in contract, strict liability, or tort (including negligence or otherwise) arising in any way out of the use of this system, even if advised of the possibility of such damage.

This disclaimer of liability applies to any damages or injury, including but not limited to those caused by any failure of performance, error, omission, interruption, deletion, defect, delay in operation or transmission, computer virus, communication line failure, theft or destruction or unauthorized access to, alteration of, or use of record, whether for breach of contract tortious behavior, negligence or under any other cause of action.

Indemnification: User agrees to defend, indemnify, and hold harmless, Quickheads.com, its contributors, any entity jointly created by them, their respective affiliates and their respective directors, officers, employees, and agents from and against all claims and expenses, including attorneys' fees, arising out of the use of the on-line or off-line services by user or user's account.



# Q2CSA11 AILERON COUNTERWEIGHT ARM (MAKE 2)

UNLESS OTHERWISE SPECIFIED:

DIMENSIONS ARE IN INCHES  
TOLERANCES:  
FRACTIONAL ±  
ANGULAR: MACH ± BEND ±  
TWO PLACE DECIMAL ±  
THREE PLACE DECIMAL ±

INTERPRET GEOMETRIC  
TOLERANCING PER:

MATERIAL **4130 STEEL**

FINISH

DO NOT SCALE DRAWING



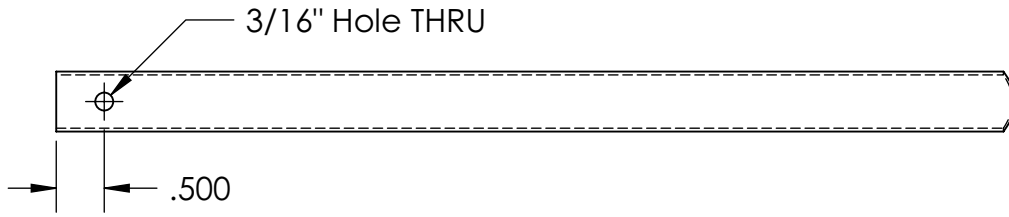
DESCRIPTION:

**PROPRIETARY AND COPYRIGHTED**  
THE INFORMATION CONTAINED IN THIS  
DRAWING IS THE SOLE PROPERTY OF  
WWW.QUICKHEADS.COM. ANY  
REPRODUCTION IN PART OR AS A WHOLE  
WITHOUT THE WRITTEN PERMISSION OF  
WWW.QUICKHEADS.COM IS  
PROHIBITED.

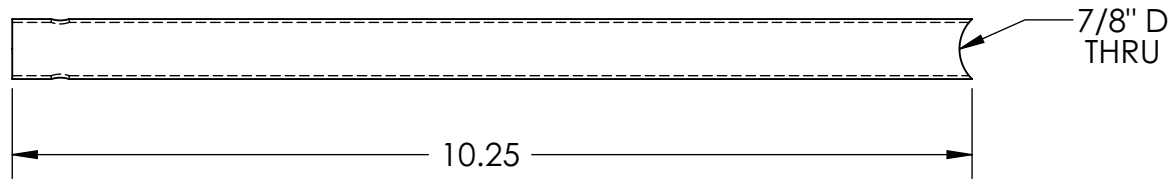
SIZE <b>A</b>	DWG. NO. <b>Q2CSA11</b>	REV
------------------	----------------------------	-----

SCALE: 1:4	WEIGHT:	1 OF 66
------------	---------	---------

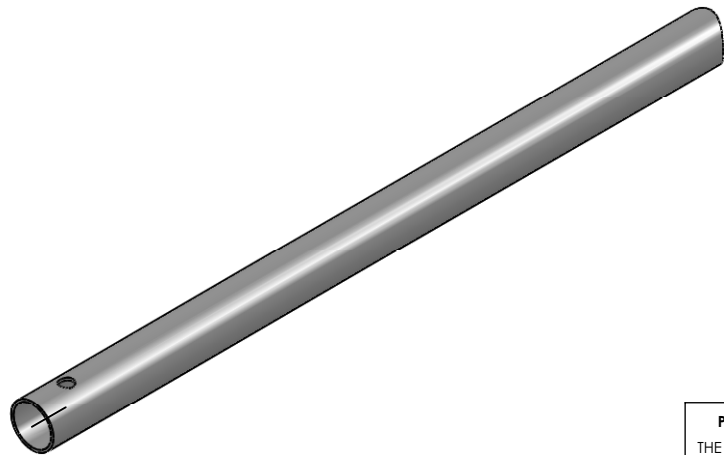
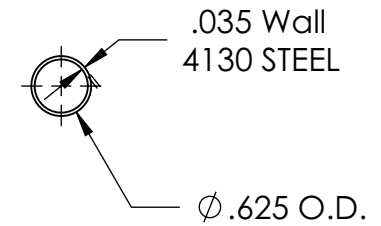
TOP



FRONT



RIGHT



UNLESS OTHERWISE SPECIFIED:

DIMENSIONS ARE IN INCHES  
 TOLERANCES:  
 FRACTIONAL ±  
 ANGULAR: MACH ± BEND ±  
 TWO PLACE DECIMAL ±  
 THREE PLACE DECIMAL ±

INTERPRET GEOMETRIC TOLERANCING PER:

MATERIAL 4130 STEEL

FINISH

DO NOT SCALE DRAWING

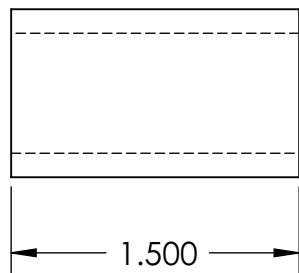


DESCRIPTION:

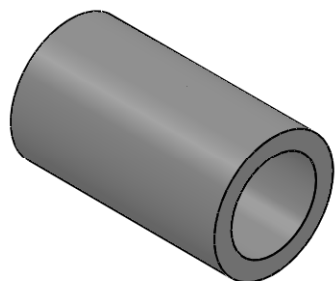
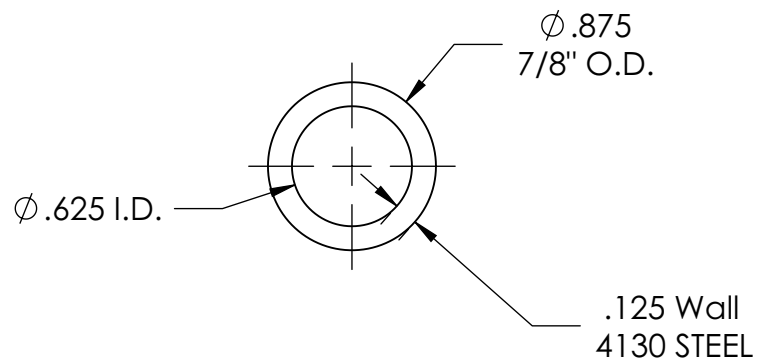
**PROPRIETARY AND COPYRIGHTED**  
 THE INFORMATION CONTAINED IN THIS DRAWING IS THE SOLE PROPERTY OF WWW.QUICKHEADS.COM. ANY REPRODUCTION IN PART OR AS A WHOLE WITHOUT THE WRITTEN PERMISSION OF WWW.QUICKHEADS.COM IS PROHIBITED.

SIZE <b>A</b>	DWG. NO. <b>Q2CSA11 LONG TUBE</b>	REV
SCALE: 1:2	WEIGHT:	2 OF 66

FRONT



RIGHT



UNLESS OTHERWISE SPECIFIED:

DIMENSIONS ARE IN INCHES  
TOLERANCES:  
FRACTIONAL  $\pm$   
ANGULAR: MACH  $\pm$  BEND  $\pm$   
TWO PLACE DECIMAL  $\pm$   
THREE PLACE DECIMAL  $\pm$

INTERPRET GEOMETRIC  
TOLERANCING PER:

MATERIAL **4130 STEEL**

FINISH

DO NOT SCALE DRAWING



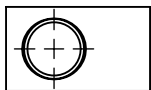
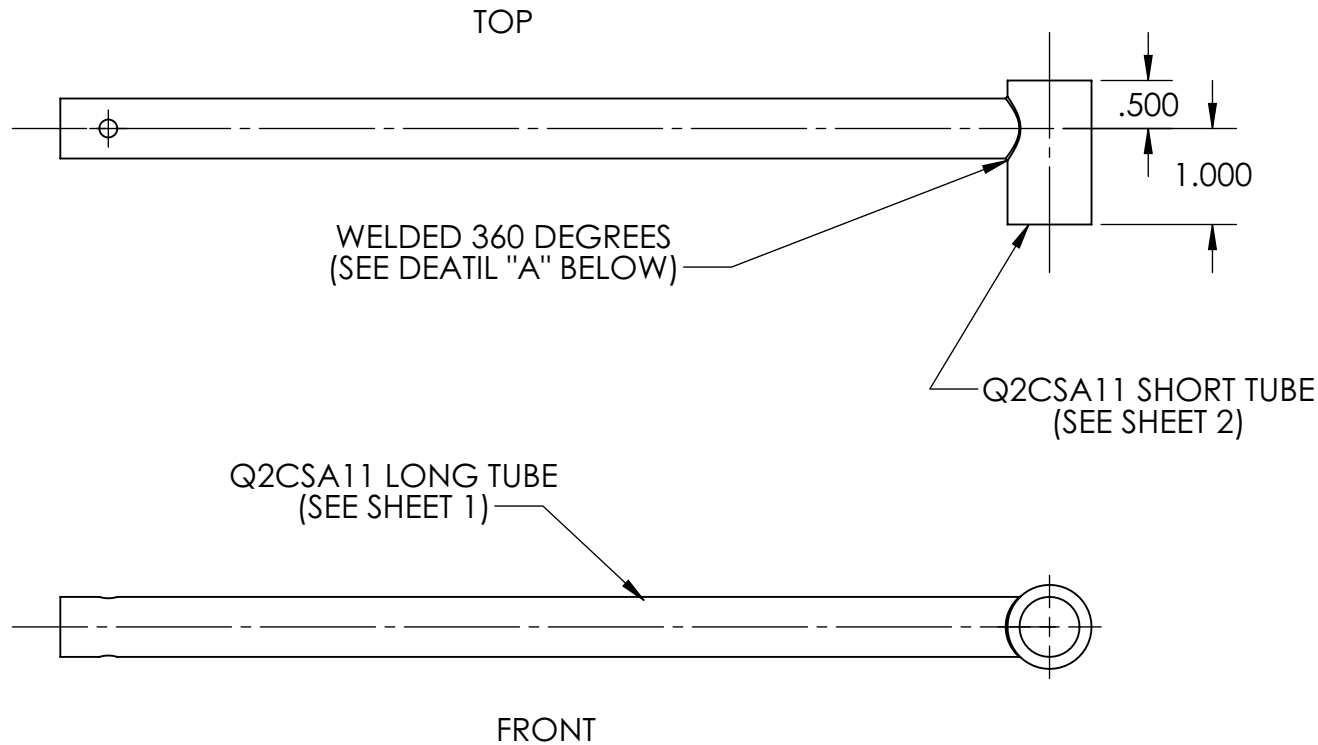
DESCRIPTION:

SIZE <b>A</b>	DWG. NO. <b>Q2CSA11 SHORT TUBE</b>	REV
------------------	---------------------------------------	-----

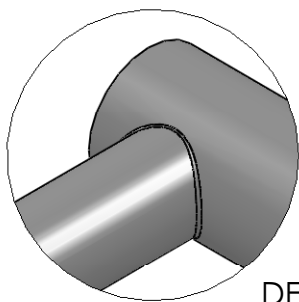
SCALE: 1:1	WEIGHT:	3 OF 66
------------	---------	---------

**PROPRIETARY AND COPYRIGHTED**

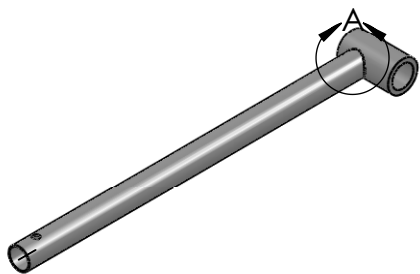
THE INFORMATION CONTAINED IN THIS DRAWING IS THE SOLE PROPERTY OF WWW.QUICKHEADS.COM. ANY REPRODUCTION IN PART OR AS A WHOLE WITHOUT THE WRITTEN PERMISSION OF WWW.QUICKHEADS.COM IS PROHIBITED.



LEFT



DETAIL A  
SCALE 1 : 1



UNLESS OTHERWISE SPECIFIED:

DIMENSIONS ARE IN INCHES  
TOLERANCES:  
FRACTIONAL ±  
ANGULAR: MACH ± BEND ±  
TWO PLACE DECIMAL ±  
THREE PLACE DECIMAL ±

INTERPRET GEOMETRIC  
TOLERANCING PER:

MATERIAL **4130 STEEL**

FINISH

DO NOT SCALE DRAWING

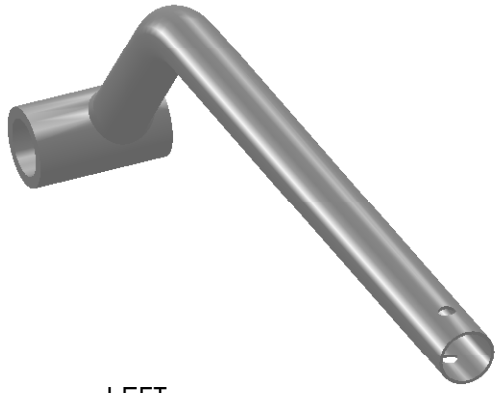


DESCRIPTION:

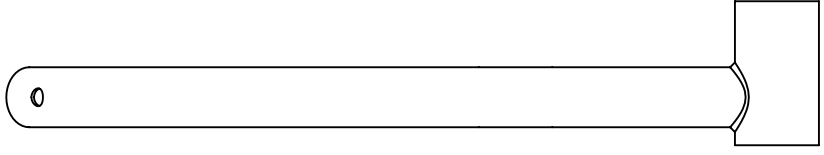
**PROPRIETARY AND COPYRIGHTED**  
THE INFORMATION CONTAINED IN THIS  
DRAWING IS THE SOLE PROPERTY OF  
WWW.QUICKHEADS.COM. ANY  
REPRODUCTION IN PART OR AS A WHOLE  
WITHOUT THE WRITTEN PERMISSION OF  
WWW.QUICKHEADS.COM IS  
PROHIBITED.

SIZE <b>A</b>	DWG. NO. <b>Q2CSA11 UNBENT</b>	REV
------------------	-----------------------------------	-----

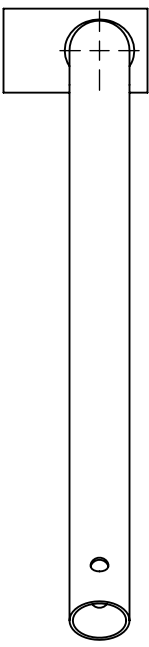
SCALE: 1:2	WEIGHT:	4 OF 66
------------	---------	---------



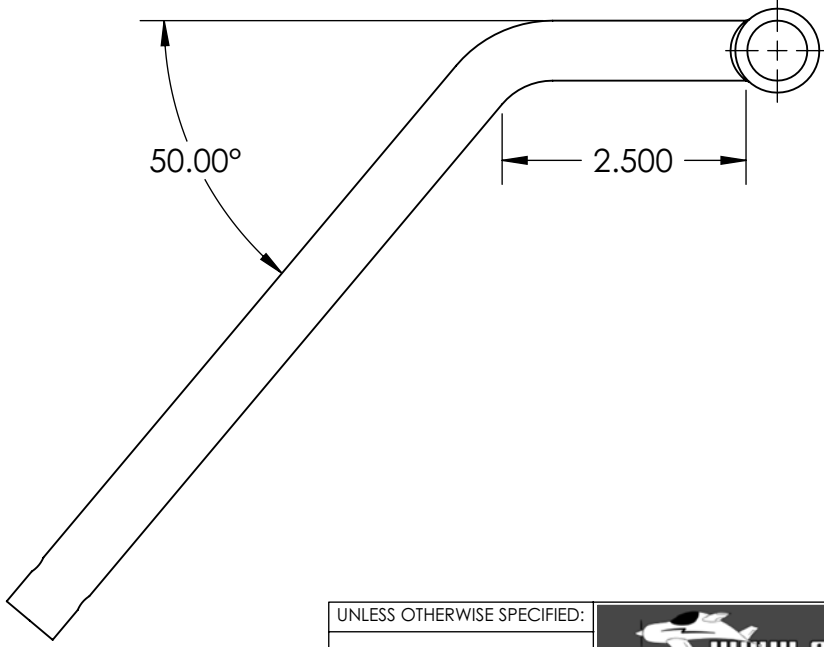
TOP



LEFT



FRONT



UNLESS OTHERWISE SPECIFIED:

DIMENSIONS ARE IN INCHES  
 TOLERANCES:  
 FRACTIONAL ±  
 ANGULAR: MACH ± BEND ±  
 TWO PLACE DECIMAL ±  
 THREE PLACE DECIMAL ±

INTERPRET GEOMETRIC  
 TOLERANCING PER:

MATERIAL **4130 STEEL**

FINISH

DO NOT SCALE DRAWING



DESCRIPTION:

**PROPRIETARY AND COPYRIGHTED**  
 THE INFORMATION CONTAINED IN THIS  
 DRAWING IS THE SOLE PROPERTY OF  
 WWW.QUICKHEADS.COM. ANY  
 REPRODUCTION IN PART OR AS A WHOLE  
 WITHOUT THE WRITTEN PERMISSION OF  
 WWW.QUICKHEADS.COM IS  
 PROHIBITED.

SIZE <b>A</b>	DWG. NO. <b>Q2CSA11 BENT</b>	REV
------------------	---------------------------------	-----

SCALE: 1:4	WEIGHT:	5 OF 66
------------	---------	---------

5

↑

4

3

2

1